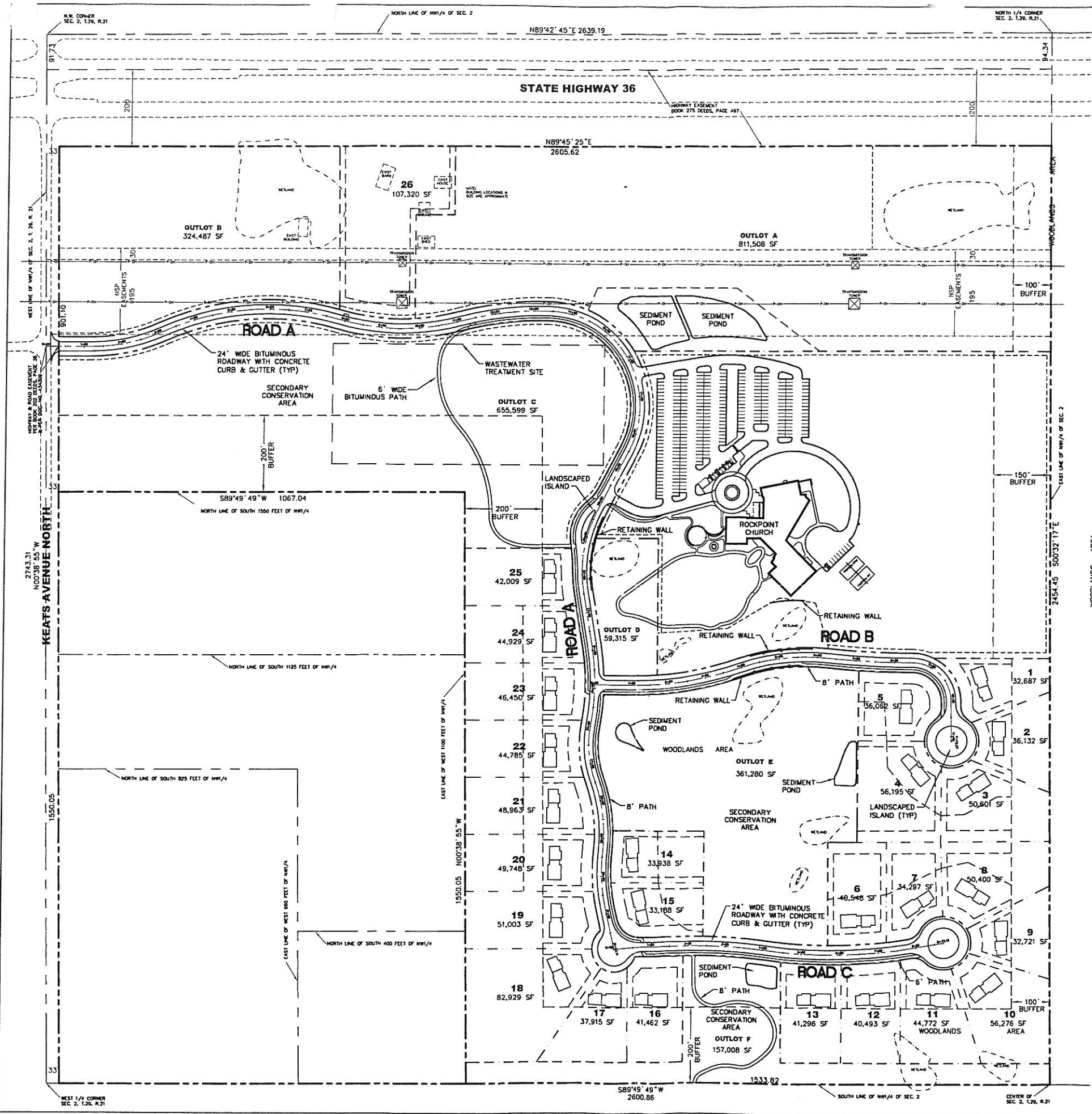
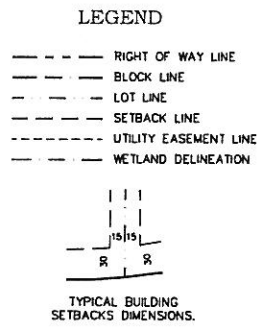


G:\RockPoint\PLAN SHEETS\Development-Plan\Rock-Develop-DEVELOP.DWG April 13, 2006 - 4:35pm



*P.P. AS Approved  
With Res Mods*



**Kimley-Horn  
and Associates, Inc.**  
190 UNIVERSITY AVE. SELL, MINN. 55409  
TEL. NO. (612) 844-4187  
FAX NO. (612) 844-5118

No.	Date	Revisions

I HEREBY CERTIFY THAT THIS PLAN, SPECIFICATIONS, OR REPORT WAS PREPARED BY ME OR UNDER MY CLOSE SUPERVISION AND THAT I AM A DULY LICENSED PROFESSIONAL ENGINEER UNDER THE LAWS OF THE STATE OF MINNESOTA.

*Paul E. Danielson, P.E.*  
PAUL E. DANIELSON, P.E.  
DATE: 3/2/06 MR. LIC. NO. 23197

**HIDDEN MEADOWS OF LAKE ELMO  
SITE DEVELOPMENT PLAN  
DEVELOPMENT PLAN**

SCALE:	1"=100'
DESIGNED BY:	RSP
DRAWN BY:	RSP
CHECKED BY:	FRB
DATE:	3/3/06
PROJECT NO.	160902006.2.001

RECEIVED  
APR 17 2006

SHEET NO.	4	OF	10
4			
10			